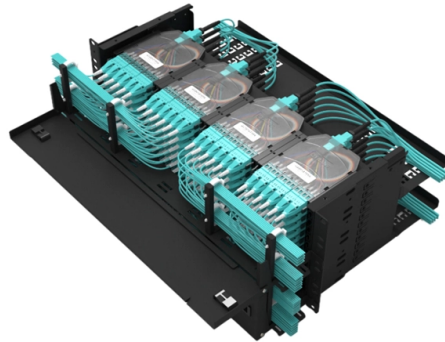


## ZTE optical modules are incompatible



### Overview

Reasons and solutions: The main reason is that the optical module is incompatible. If it is incompatible with the switch brand, you can directly replace the optical module. When a ZXR10 switch comes online but ports stay down, the root cause is often optics mismatch: the wrong wavelength, an unsupported DOM flavor, or a transceiver that simply does not pass ZTE's compatibility checks. Verify Switch and Module Compatibility Check the switch manufacturer's compatibility. SFP issues are among the most common and frustrating problems in fiber optic and Ethernet networking environments. Whether you are dealing with a no link light, intermittent connectivity (link flapping), or a transceiver not detected error, the root cause is often not immediately obvious. The TE ZXHN F660 ONT supports GPON (Gigabit Passive Optical Network) technology. In GPON systems, downstream data is transmitted at a wavelength of 1490 nm, and upstream data is transmitted at a wavelength. A mismatched SFP module can brick ZTE OLT C320/C300 boards. It does not necessarily reflect.

## Article Content

ZTE switch optics with ZXR10: compatibility, tradeoffs, and picks

Learn how to match ZTE switch optics to ZXR10 ports, compare 10G/25G/40G modules, avoid compatibility traps, and estimate TCO for real rollouts.

ZTE SFP Module Optical Bit Error Rate Problem. SFP Module Check ...

ZTE SFP Module Optical Bit Error Rate Problem. SFP Module Check Procedure. #zte #bbu #bts #module

Field Tested: The Ultimate Guide to SFP Modules for ZTE ...

A mismatched SFP module can brick ZTE OLT C320/C300 boards. Always verify optical class and compatibility with GTGO/GTGH boards to ensure proper performance and network stability.

SFP Issue: Causes, Fixes, and Troubleshooting Guide

Learn how to fix SFP issues fast: no link light, link flapping, detection errors, compatibility problems, and optical power checks.

How to solve the problem of SFP module compatibility problems?

These issues typically arise when SFP modules are incompatible with the switches, routers, or optical fiber cables they are paired with. Here's a structured approach to solving SFP module compatibility ...

Summary of common problems and solutions of optical modules in use

Solution: Check whether the working parameters, interface information and receiving and sending of the optical module are normal, and then check the optical fiber jumper, or try to replace ...

Issue with A7510 and ZTE switch optical connection | Comware

RE: Issue with A7510 and ZTE switch optical connection. With supported transceivers in place, you can use the display transceiver command to get additional information that might be useful.

ZTE OLT FAQ: Expert Answers to Technical & Deployment Questions

ZTE OLT (Optical Line Terminal) devices are widely deployed in FTTx networks globally, including the popular ZTE C300 and C600 series. This FAQ addresses real technical concerns from ...

I Want to Replace My ZTE F660 ONT With An SFP GPON ONT ...

The TE ZXHN F660 ONT supports GPON (Gigabit Passive Optical Network) technology. In GPON systems, downstream data is transmitted at a wavelength of 1490 nm, and upstream data is ...

## Troubleshooting and Repairing Optical Transceiver Failures in ...

Have you ever experienced an unexpected network outage due to the failure of an SFP/SFP+ optical transceiver?

### Guidelines for Interoperability and Compatibility of Optical Modules

A 1310nm optical module will not interconnect with an 850nm optical module. The wavelength of the optical module needs to be matched at each end, and wavelength mismatch may cause data loss ...

## Contact Us

For more information, pricing, or custom solutions, please contact us:

Website: <https://www.mastercarpetsandflooring.co.za>

Email: [info@mastercarpetsandflooring.co.za](mailto:info@mastercarpetsandflooring.co.za)

Phone: +27 82 547 3961

Address: 21 Maxwell Drive, Woodmead, Sandton, 2191, South Africa

This document is for informational purposes only. Specifications subject to change without notice.

