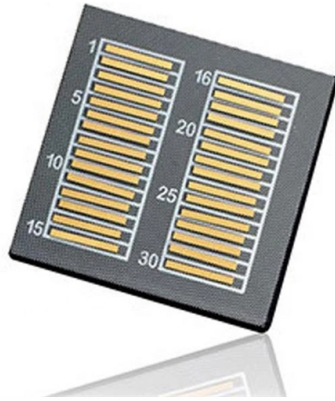


What equipment is connected to the power distribution box



Overview

Home distribution boxes typically handle single-phase power supplies and contain 6 to 24 circuits. They include standard circuit breakers for lighting, outlets, and major appliances like water heaters and air conditioning units. It acts like a hub or traffic controller, managing power flow to different areas or devices. We also highlight how reliable manufacturers like NUOMAK support stable, compliant, and cost-effective power distribution. A distribution box, also known as a distribution board, electrical panel, or breaker box, is an enclosure that houses electrical components responsible for distributing electricity throughout a building. It receives power from the main electrical supply and divides it into separate circuits, each. Power Distribution Equipment is a term generally used to describe any apparatus used for the generation, transmission, distribution, or control of electrical energy.



Article Content

What is an Electrical Distribution Box? A ...

An electrician will connect the mains power to the distribution box, then branch out from there to different circuits. Once everything's wired, testing ...

What is an Electrical Distribution Box? A Comprehensive Guide

An electrician will connect the mains power to the distribution box, then branch out from there to different circuits. Once everything's wired, testing ensures the breakers trip correctly, and ...

How Does a Power Distribution Box Work: A Guide

Inside, it houses circuit breakers, busbars, and terminals that collectively control and protect electrical flow. These boxes are vital within broader power distribution systems, linking ...

Distribution Box Guide: Types, Components & Solutions

The distribution box (DB box) helps safely and efficiently distribute electrical power. Today, electrical systems are essential for homes and industries. But what exactly is a power ...

Power Distribution Boxes Explained Simply

Electricity enters the box from the main power line. Inside, the power splits into multiple circuits, each supplying a specific area, such as a kitchen, workshop, or machinery. Safety devices ...

Power Distribution Systems

This section delves into the major components of AC power distribution systems, including distribution lines, distribution transformers, circuit breakers and switchgear, distribution substations, and voltage ...

Ultimate Guide To Distribution Boxes Db Boxes Types Components ...

This ultimate guide explains what a distribution box does, its internal components, common types, real-world applications, and how to select the right DB Box for your project.

Power Distribution Boxes Explained Simply

It acts like a hub or traffic controller, managing power flow to different areas or devices. Key components include circuit breakers, fuses, bus bars, and internal wiring for safety and ...

Electrical Distribution Equipment: Ensuring Safe and Efficient Power ...

In commercial buildings, office complexes, and industrial facilities, power distribution equipment ensures that electrical systems are safe and efficient. High-capacity transformers, ...

Power Distribution Equipment

Power Distribution Equipment is a term generally used to describe any apparatus used for the generation, transmission, distribution, or control of electrical energy.

The Complete Guide to Distribution Box: Installation, Types & More

Home distribution boxes typically handle single-phase power supplies and contain 6 to 24 circuits. They include standard circuit breakers for lighting, outlets, and major appliances like water ...

Contact Us

For more information, pricing, or custom solutions, please contact us:

Website: <https://www.mastercarpetsandflooring.co.za>

Email: info@mastercarpetsandflooring.co.za

Phone: +27 82 547 3961

Address: 21 Maxwell Drive, Woodmead, Sandton, 2191, South Africa

This document is for informational purposes only. Specifications subject to change without notice.

