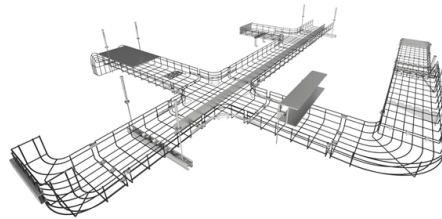


What are the horizontal bars of the fiber distribution box



Overview

They function as junction points that manage, protect, terminate, and distribute fiber optic cables, ensuring efficient data transmission between different network elements. Minimize the interference of the optical cable access signal to the external environment. The Fiber Distribution Boxes (FDBs) are critical components in modern telecommunications infrastructure, particularly in fiber optic networks. The distribution box provides. In broadband optical fiber access network, we often see the all kinds of fiber box such as fiber cabinet, fiber optic distribution box, fiber optic terminal box, multimedia box, and customer box. The fiber termination box is. The equipment is a style closure that is sealed mechanically pre connected horizontal connector box. It integrates fiber splicing.

Article Content

Fiber Optic “Big Three”: Termination Box, Distribution Box & ODF

While a fiber optic termination box serves a single user or only a limited number of users (less than five), a Fiber Distribution Box is designed to provide fiber access for multiple users.

All You Need To Know About Fiber Termination Boxes: Installation ...

In network cabling, outdoor connections generally use fiber optic cables. When these optical fibers are installed or laid out, a Fiber Termination Box, or FTB, is used to distribute and ...

Optical fiber distribution box structure

The optical fiber distribution box is to protect the connection point where the optical cable is connected to the user end, so that the optical cable access point is stable, dustproof and waterproof.

Ultimate Guide to Fiber Optic Distribution Box: Types ...

Some common types of fiber optic distribution boxes include wall-mounted, rack-mounted, outdoor, and dome-shaped boxes. Each type is designed for specific installation ...

Waterproof 12 port Fiber Distribution Box Pre-terminated Fiber Access ...

The equipment is a style closure that is sealed mechanically pre connected horizontal connector box is single-ended design and is generally used as a Sub-box terminal in an unequal ratio fully pre ...

Fiber Distribution Frame FDF

Wall-mounted fiber distribution frames are typically designed as box-like structures, ideal for locations with fewer cables and fiber cores. Rack-mounted fiber distribution frames can be directly installed in ...

What's Inside a Fiber Distribution Box? Let's Break It Down!

FDBs are specifically designed to safeguard delicate fiber optic connections from environmental and physical damage. By protecting splices, connectors, and cables from dust, moisture, UV exposure, ...

Fiber Box Types and Applications in FTTH Network

There are horizontal splice closure and vertical splice closure dome, it is the only fiber box that can be used in aerial, duct and direct burial all type of fiber optic cable connections. Splice ...

Fiber Distribution Box Datasheet | PDF | Optical Fiber ...

It describes the components and features of FDBs, including their waterproof design, fiber management capabilities, splitter installation options, and environmental specifications.

COMMUNICATIONS DISTRIBUTION SYSTEM DRAWINGS

Max RG59/U (or smaller) coaxial cable with fluorinated ethylene insulation and jacketing. Max 62.5/48 fiber optic cable with PVC insulation and jacketing. Max 4 pair No. 24 AWG (or smaller) copper ...

Contact Us

For more information, pricing, or custom solutions, please contact us:

Website: <https://www.mastercarpetsandflooring.co.za>

Email: info@mastercarpetsandflooring.co.za

Phone: +27 82 547 3961

Address: 21 Maxwell Drive, Woodmead, Sandton, 2191, South Africa

This document is for informational purposes only. Specifications subject to change without notice.

