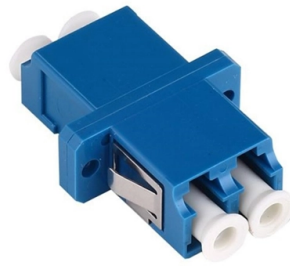


Upon opening the door you ll see the electrical distribution box



Overview

It houses circuit breakers or fuses that control the flow of electricity to different areas of your home. When you open the panel door, you'll see a row of switches (circuit breakers) or a collection of fuses. Locate and open your electrical panel door. Identify main breaker and individual circuit breakers. The panel houses circuit breakers that control individual circuits to protect wiring, appliances, and your household in case of electrical. In this inspection article, we will learn about inspecting the main electrical panelboard, from the utility service to the breakers, including common components of the panelboard, and an inspection checklist. To find it quickly, look for a rectangular gray metal box about the size of a medicine cabinet, often positioned close to.



Article Content

Inside Your Home's Electrical Service Panel

To solve the mystery behind these mini-outages, look at your home's main electrical service panel or breaker box—the distribution center for all the electricity you consume.

How to Find your Home's Electrical Panel

Look for a gray, rectangular metal box about 12 to 18 inches wide with a hinged door. Trace the main electrical service line from the outside meter to where it enters the house. The panel ...

Breaker Box 101: Understanding What's Behind the Door

It's called a breaker box, and even though it might not look very exciting on the outside, what's behind that little door is the heart of your home's electrical system.

Understanding Your Home's Electrical Panel: A Homeowner's Guide

Your home's electrical panel, also known as the breaker panel or fuse box, is a crucial component of your electrical system. It distributes electricity to various circuits throughout your home, ...

How to Read a Breaker Box | A Homeowners Guide

In this guide, we'll walk you through how to use a breaker box, how to identify parts like the main breaker, and even cover how electrical panels work—all in a clear, non-intimidating way.

Inspecting the Main Electrical Panelboard During a Home Inspection

Learn how to inspect the electric service panelboard and common electrical components in this inspection article provided by InterNACHI®.

How to Inspect a Residential Electrical Distribution Panel

Main electrical panel inspection procedures & defects: This article summarizes inspection of the building electrical panel, main panel, or electrical distribution and sub panels.

Electrical Panel: What You Need To Know to Run Yours

What's In An Electrical Panel? An electrical panel has just a few main parts. Open the door, and up at the top, you'll see the main circuit breaker, which is a switch connected to the main ...

Inspecting the Main Electrical Panelboard During a ...

Learn how to inspect the electric service panelboard and common electrical components in this inspection article provided by InterNACHI®.

How to Read Your Electrical Panel | Mr. Electric

Your breaker panel controls the electrical distribution throughout your home from a single location—and it's easier to understand than you might expect. This guide will show you how to read ...

Understanding Your Home's Electrical Panel: A ...

Your home's electrical panel, also known as the breaker panel or fuse box, is a crucial component of your electrical system. It distributes electricity to ...

Where Is the Distribution Box Located and How to Find It

Learn where distribution boxes are typically located in homes and get step-by-step instructions for finding your electrical panel. Includes safety tips and troubleshooting advice.

Contact Us

For more information, pricing, or custom solutions, please contact us:

Website: <https://www.mastercarpetsandflooring.co.za>

Email: info@mastercarpetsandflooring.co.za

Phone: +27 82 547 3961

Address: 21 Maxwell Drive, Woodmead, Sandton, 2191, South Africa

This document is for informational purposes only. Specifications subject to change without notice.

