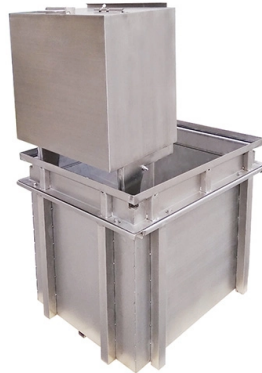


The cover of the distribution box can be pushed and pulled



Overview

The cover is plugged onto the header simply without screws. Locking clips ensure a secure hold. The M12 push-pull distributor boxes feature a consistent, tool-free, and intuitive installation. Master cables and M12 connectors are connected conveniently and safely by direct connection. The new M12 distributor boxes for self-assembly. However, in residential work if a box was needed just as a pull point with no splices in it, then why must it be accessible?

?

My issue is that the client wants to raise there main electrical panel by 8 inches, which will raise the panel above the nipple coming from the meter can. Electrical safety: hazards when removing the electrical panel cover. ecification sheet for weight and wind loading (EPA) data. Supporting and mounting structures must comply to industry standard capacity requiremen and the environmental stress for the life of the syst luminaire, internal wiring, or fixture mounting features. Opening or ted from dirt, water, and.

Article Content

INSTALLATION MANUAL REMOTE POWER SYSTEM: ...

Distribution Box is split into an AC half and a DC half. Each of the main electrical routes has Boxes are all located on the left side of the enclosure. The splice connections between DC in from the PAC ...

The installation requirements for the distribution box

Learn how to install a distribution box safely and correctly. Covers wiring, placement, standards, and expert tips for a compliant setup.

The purpose, working principle, and usage instructions ...

During normal operation, the circuit can be connected or disconnected using manual or automatic switches.

Pull/Junction/Terminal Boxes | nVent HOFFMAN

nVent HOFFMAN provides reliable solutions that are consistently in-stock to help protect electronic or terminal wire connections. Lead Time - View accurate lead times to plan your delivery expectations. ...

Is there any situation where a "Pull Box" can be covered up??

Ideally it would be great to just place a J-box to protect the wire and place under the existing panel and then just cover the box up in the wall. If this was ran in romex it would be fastened ...

POWER DISTRIBUTION BOX ASSEMBLY GUIDE

Phase 3's Powersafe Sequential Mating Box controls the connection sequence of incoming / outgoing high current cable connections. The sequence ensures that the Earth connection is made first and ...

Understanding Distribution Boxes: A Comprehensive Guide

Learn what a distribution box is, its types, and how to choose the right one for your project. Includes clear examples and expert tips.

M12 push-pull distributor boxes | Phoenix Contact

The new M12 distributor boxes for self-assembly feature a plug-in cover connection with snap-in locking. The cover is plugged onto the header simply without screws.

Outlet, Device, Pull, and Junction Boxes; Conduit Bodies ...

It specifies requirements for materials, grounding, and installation practices, including the use of metal and nonmetallic boxes, and their respective conditions for use.

Open the Electrical Panel Cover

Electrical safety: hazards when removing the electrical panel cover. This article discusses hazards that can be spotted at the electrical panel before even touching it and provides safety procedures to ...

Contact Us

For more information, pricing, or custom solutions, please contact us:

Website: <https://www.mastercarpetsandflooring.co.za>

Email: info@mastercarpetsandflooring.co.za

Phone: +27 82 547 3961

Address: 21 Maxwell Drive, Woodmead, Sandton, 2191, South Africa

This document is for informational purposes only. Specifications subject to change without notice.

