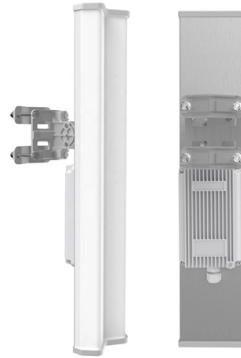


Switch Fiber Optic Access Status



Overview

Display diagnostics data and alarms for Gigabit Ethernet optical transceivers (SFP, SFP+, XFP, QSFP+, or CFP) installed in EX Series Switches or QFX Series Switches. This document describes how to troubleshoot fiber optic interfaces by addressing some of the fiber optic module and cabling specifications. There are no specific requirements for this document. DOM is supported on MS120, MS125, MS130, MS210. Here's a list of commonly used Cisco MDS Fibre Channel (FC) switch show commands along with their explanations and descriptions. General System Information Displays software and hardware version details. Displays environmental status (temperature. When optical modules operate on a switch, it is usually necessary to read the module's internal information to understand its working status—such as connection status and real-time metrics like optical power and temperature. Additionally, identifying module information helps detect coding. How to check fiber ports in cisco switch?

1. Connect to the Cisco switch using a console cable or through a remote management interface. Thresholds that trigger a high.

Article Content

Troubleshoot Fiber Links on Catalyst 9000 Series Switches

This document describes how to troubleshoot fiber optic interfaces by addressing some of the fiber optic module and cabling specifications.

Solved: Fiber optic cable check command

The command "show interface transceiver detail" will NOT work on non-DOM (Digital Optical Monitoring) modules, like the SFP. If you have a 10Gb module or the ruggedized SFP, try ...

How to check fiber cable in cisco switch?

Solution: Clean the connectors, replace the cable if damaged, and use an optical power meter to check signal levels. In conclusion, checking fiber optic cables in a Cisco switch involves a combination of ...

How to check fiber ports in cisco switch?

Use the "show interface" command on the switch's command line interface (CLI) to display the status and statistics of the fiber ports. This command will provide information about the interface, including ...

How To View Port Status And Optical Module Information On EXTREME Switches

When optical modules are installed on switches, it is necessary to read internal module parameters to monitor operating status, including link connectivity, real-time transmit/receive optical power, and ...

Cisco MDS Fibre Channel (FC) switch show commands

This list covers the most commonly used Cisco MDS show commands for SAN switch management, troubleshooting, zoning, performance monitoring, and high availability.

Digital Optical Monitoring

In the left-hand navigation menu, navigate to Switching > Monitor > Switches to view the list of switches on the network. Select a switch to access its specific page.

show interfaces diagnostics optics | Junos OS | Juniper Networks

Display diagnostics data and alarms for Gigabit Ethernet optical transceivers (SFP, SFP+, XFP, QSFP+, or CFP) installed in EX Series Switches or QFX Series Switches.

How To View Port Status And Optical Module Information On Cisco ...

When optical modules operate on a switch, it is usually necessary to read the module's internal information to understand its working status—such as connection status and real-time ...

View the Optical Module Status on a Switch through the ...

This article provides instructions on how to view the Optical Module Status on your switch through the Command Line Interface (CLI). The Cisco Small Business Series Switches allow you to plug in a ...

Contact Us

For more information, pricing, or custom solutions, please contact us:

Website: <https://www.mastercarpetsandflooring.co.za>

Email: info@mastercarpetsandflooring.co.za

Phone: +27 82 547 3961

Address: 21 Maxwell Drive, Woodmead, Sandton, 2191, South Africa

This document is for informational purposes only. Specifications subject to change without notice.

