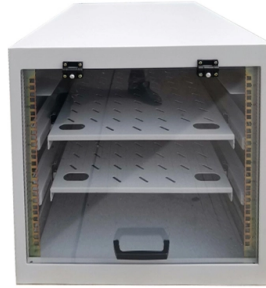


## Standard Wiring Method for Mobile Power Distribution Boxes



### Overview

Check for proper IP/NEMA ratings and material quality. Ensure safe placement: install in dry, accessible areas with good ventilation and at appropriate height (typically ~1. The provisions of this paragraph do not apply to conductors which form an integral part of equipment such as motors, controllers, motor control centers and like equipment. Metal raceways, cable armor, and. It takes the incoming power and safely distributes it to different circuits throughout your building. First and foremost, it is important to recognize the significance of the electrical panel in a mobile home. Engineering assistance is available through the Customer Call Center. If there is a short circuit, the earth bar sends the dangerous electricity into the ground instead of through your body.

## Article Content

### Standard

The “Xcel Energy Standard for Electric Installation and Use” is a valuable timesaving publication that will help to determine the necessary requirements for customers' wiring intended to be connected to the ...

### Distribution Box Wiring Steps

Wiring Direction: Wiring between the main circuit breaker and each branch circuit breaker in the box generally goes on the left, and the wiring out of the distribution box generally goes on the ...

### Understanding Circuit Breaker Wiring Configurations in ...

Master the safest and most efficient circuit breaker wiring configurations. Learn about single-phase vs. three-phase setups, safety standards, and future-proof electrical ...

### 2024 Electric Service Requirements Manual (LADWP)

This manual is for electronic distribution only and is designed to provide you with the most current information on the Los Angeles Department of Water and Power's (Department) service equipment ...

### How to Build a DIY Temporary Power Distribution Box

Securely manage job site power. Build a compliant temporary distribution box, detailing component sizing, critical grounding, and wiring integrity.

### Demystifying Mobile Home Electrical Panel Wiring: A ...

Explore a wiring diagram for the electrical panel in a mobile home and learn about the various components and connections. Ensure the safety and efficiency of ...

### 1926.405

Multiconductor portable cable for use in supplying power to portable or mobile equipment at over 600 volts, nominal, shall consist of No. 8 or larger conductors employing flexible stranding.

### The installation requirements for the distribution box

Learn how to install a distribution box safely and correctly. Covers wiring, placement, standards, and expert tips for a compliant setup.

### Electric Panel Installation Method Statement | PDF | Fuse ...

METHOD STATEMENT FOR Electric panel and distribution box installation and termination - Free download as PDF File (.pdf), Text File (.txt) or read online for free. This document provides a method ...

## Demystifying Mobile Home Electrical Panel Wiring: A Comprehensive ...

Explore a wiring diagram for the electrical panel in a mobile home and learn about the various components and connections. Ensure the safety and efficiency of your mobile home's electrical ...

## Power Distribution Systems

Electro Centers or Integrated Power Assemblies (IPA) can be fitted out with a variety of electrical distribution equipment and shipped to the site in preassembled modules for mounting on elevated ...

## Electric Service and Meter Installations Manual

The information contained in this booklet refers primarily to service requirements at the usual secondary distribution voltages for light and power installations.

## Contact Us

For more information, pricing, or custom solutions, please contact us:

Website: <https://www.mastercarpetsandflooring.co.za>

Email: [info@mastercarpetsandflooring.co.za](mailto:info@mastercarpetsandflooring.co.za)

Phone: +27 82 547 3961

Address: 21 Maxwell Drive, Woodmead, Sandton, 2191, South Africa

This document is for informational purposes only. Specifications subject to change without notice.

