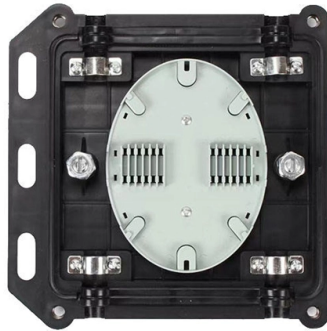


Selection Guide for Metro-Grade CFP2 Low-Loss Applications



Overview

This guide provides a clear overview of 400G ZR QSFP-DD standards, specifications, and selection criteria for coherent pluggable optics in metro and long-haul networks. QSFP-DD ZR Coherent Optics presents a sea of change in the field of optical transportation architecture. Acacia's engineering team led by Hongbin Zhang recently demonstrated real-time transmission of 16 Tb/s (80x200Gb/s) over 1020km TeraWave ULL fiber with 170km span length using the 200Gb/s CFP2 module. The length, while much longer than typical metro/regional spans, was chosen to stress the OSNR. InnoLight coherent CFP2 DCO product family is designed based on dual polarization quadrature phase shift keying (DP-QPSK) or dual polarization quadrature amplitude modulation (DP-16QAM) or probabilistic constellation shaping quadrature amplitude modulation (PCS-16QAM), supporting extended C-band. Optical modules are not "just optics": they are tightly-coupled electrical recovery/equalization, optics bias/monitoring, and power/thermal control in a pluggable package. Stable interoperability and low BER depend on managing SI margin, optical/Rx chain linearity, telemetry trust (CMIS/DOM), and. Cisco offers a range of GBIC, SFP, XFP, SFP+, CXP, CFP, Cisco CPAK, and QSFP+ pluggable modules. These small, modular optical interface transceivers offer a convenient and cost-effective solution for an array of applications in the data center, campus, metropolitan-area access and ring network. RoHS-6 compliant. Jabil Photonics CFP2-DCO module can be used on host board to support transmission over DWDM links in Metro networks, Data Center Interconnect (DCI), and Long Haul (LH) applications, as well as Point-to-Point (P2P) coherent transmission up to 80km unamplified link for 5G wireless. Originally introduced as the first standardized pluggable solution for 100 Gigabit Ethernet, CFP (C Form-factor Pluggable) modules were engineered to support high-bandwidth, lon...

Article Content

Cisco 400G Digital Coherent BiDi CFP2 Data Sheet

These small, modular optical interface transceivers offer a convenient and cost-effective solution for an array of applications in the data center, campus, metropolitan-area access and ring network, storage ...

Pluggable Optics for Coherent Systems: The CFP2-ACO Interface

The CFP2-ACO team was able to draw on this reserve of specialist knowledge to understand how to define and also test the linear RF channels into and out of the module.

CFP2-Metro and Long Haul Optical Networking

The product family supports 100/200/400Gbps transmission speeds in an industry-standard, pluggable CFP2 form factor with 7nm DSP and can be widely used in metro carrier, access and Cloud/DCI ...

CFP Optical Module: Complete Guide, Types, and 100G Use Cases

Understand CFP optical modules, including types, 100G applications, pros and cons, and CFP vs QSFP28 comparisons to choose the right solution.

DWDM and OTN Equipment

The solution is low power consumption and saves rack space, reducing overall CAPEX and OPEX, and enabling to easily and cost-effectively increase capacity of short haul networks.

CFP2 MSA

This CFP Multi-Source Agreement (MSA) defines the CFP2 form factor of an optical transceiver to support 40Gbit/s and 100Gbit/s interfaces for Ethernet, Telecommunication and other applications.

QSFP-DD ZR Coherent Optics: 400G Metro & Long-Haul Guide

This guide provides a clear overview of 400G ZR QSFP-DD standards, specifications, and selection criteria for coherent pluggable optics in metro and long-haul networks.

100G/200G CFP2-DCO COHERENT MODULE Transceiver

Description Jabil Photonics CFP2-DCO module can be used on host board to support transmission over DWDM links in Metro networks, Data Center Interconnect (DCI), and Long Haul (LH) applications, as ...

Testing the CFP2 Coherent Module for Metro Applications

Transmission reaches for metro applications have to be above 50 km for metro/access and below 1000 km for metro/regional applications. This requires compact, scalable, cost-efficient, ...

Optical Modules: QSFP-DD/QSFP56 & CFP2-DCO Guide

Deep-dive into QSFP+/28/56/DD and CFP2-DCO modules: CDR/retimers, PAM4 DSP, laser drivers, TIAs, CMIS/DOM, power & test.

Contact Us

For more information, pricing, or custom solutions, please contact us:

Website: <https://www.mastercarpetsandflooring.co.za>

Email: info@mastercarpetsandflooring.co.za

Phone: +27 82 547 3961

Address: 21 Maxwell Drive, Woodmead, Sandton, 2191, South Africa

This document is for informational purposes only. Specifications subject to change without notice.

