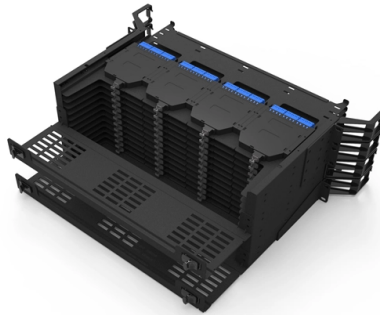


## Punching of cable tray partitions



### Overview

Punch presses create the holes, knockouts, and slots that make cable trays functional: mounting holes for hanging brackets, ventilation slots for heat dissipation in power cable runs, and prepunched connection points for joining sections without drilling in the field. This guide walks through each core machine, how they fit into a typical production line, what specifications to evaluate, and how to match machine choices to the cable tray types and volumes you plan to manufacture. Utilizing advanced automation technology combined with precise punching, bending, and cutting. At Shree Jagdamba Enterprises, we offer a comprehensive range of Cable Tray Punching Machines that enable efficient and precise punching of cable tray systems. Our machines are designed to meet the demands of diverse industries and deliver exceptional results in cable tray manufacturing. With its advanced PLC control system and automated. Cable tray punching machines serve as indispensable equipment in electrical infrastructure projects globally. 1mm, ensuring secure routing for electrical wiring in commercial.

## Article Content

### Rotary Punch Cable Tray Production Line

Rotary Punching Machine perforates sheet metal width 10 to 190 cm, thickness 1 mm to 1.5 mm at a speed of 24 m / min. Our machine is preferred due to its high speed and low energy capabilities in ...

### Cable tray manual

Instead of large conduits, cable channel may be used very effectively to support cable drops from the cable tray run to the equipment or device being serviced and is ideal for cable tray runs involving a ...

### Cable Tray Machine

Our range of products include automatic cable tray metal punching machine, cable tray perforating machine, semi automatic cable tray roll forming machine and ms cable tray roll forming machine.

### cable tray punching machine

High-speed cable tray punching machine delivers precise holes for efficient cable tray production.

### High-Speed Cable Tray Punching Machine Precision & Durability

Boost productivity with our heavy-duty cable tray punching machine, engineered for precision hole punching in cable tray fabrication. Ideal for electrical installations and industrial projects.

### High-Speed Cable Tray Punching Machine Precision

Boost productivity with our heavy-duty cable tray punching machine, engineered for precision hole punching in cable tray fabrication. Ideal for electrical installations ...

### Cable Trays 2023

The lines we propose allow industrialising any type of cable tray. Our lines are suitable to manufacture cable trays, in different widths, heights, and thicknesses, at a high rate, with low changeover times.

### Cable Tray Punching Machines

These machines are designed to punch holes, slots, or perforations in cable tray components with precision and speed, optimizing your manufacturing capabilities.

### Cable Tray Manufacturing Machines: Press Brake, Punch Press

Learn which machines make cable trays — roll forming, press brake, punch press, and shearing line. Step-by-step process guide, specifications, and machine selection tips for 2026.

## Cable Tray Punching Machine

Utilizing advanced automation technology combined with precise punching, bending, and cutting processes, this machine efficiently completes the forming and processing of cable trays, meeting the ...

## Cable Tray Punching Machine for Trough Trays

Equipped with durable rollers, robust frames, and reliable hydraulic units, the cable tray punching machine can handle a wide range of tray sizes and thicknesses. It is suitable for producing cable ...

## Contact Us

For more information, pricing, or custom solutions, please contact us:

Website: <https://www.mastercarpetsandflooring.co.za>

Email: [info@mastercarpetsandflooring.co.za](mailto:info@mastercarpetsandflooring.co.za)

Phone: +27 82 547 3961

Address: 21 Maxwell Drive, Woodmead, Sandton, 2191, South Africa

This document is for informational purposes only. Specifications subject to change without notice.

