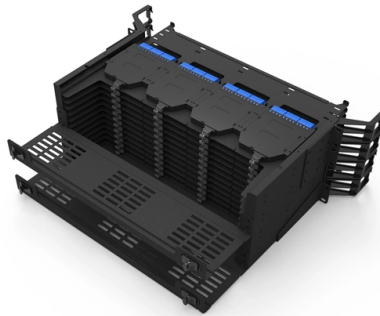


Parameters of Low-Voltage Display Cabinet



Overview

Rated Voltage – Commonly 380 V / 400 V / 415 V (3-phase), or match your system standard. Rated Current – Size according to maximum load demand, plus growth margin. The ABB MNS® low voltage distribution board and power cabinet are a new set of modular and multipurpose low-voltage products. Cabinets can be classified based on material (e. In low-voltage power distribution, the cabinet is never just a cabinet, and the busbar is never just a strip of copper. Behind every reliable low voltage switchgear lineup is a design balance that is harder than it first appears: current must flow safely, heat must be controlled, internal space. Low-voltage distribution cabinets are core equipment in industrial power distribution systems, responsible for converting high-voltage electrical energy into low-voltage electrical energy and distributing it to various electrical equipment.

Article Content

XL-21 LV Power Distribution Cabinets

Its flexible design and comprehensive functions meet various power distribution requirements. It can meet the demands for compact, diverse, and flexible switchgear solutions. It can be used in ...

Understanding the Essentials of Low Voltage ...

This article explores the fundamental role of low voltage distribution cabinets, their key features, and the critical technologies that drive their functionality.

Understanding the Essentials of Low Voltage Distribution Cabinets

This article explores the fundamental role of low voltage distribution cabinets, their key features, and the critical technologies that drive their functionality.

Understanding GGD Type AC Low Voltage Distribution Cabinets: A ...

These parameters underline the advantages of choosing GGD cabinets for environments that demand a reliable, efficient, and economically viable solution for low-voltage distribution needs.

Understanding Low Voltage Distribution Cabinets: A Comprehensive ...

Selecting the appropriate low voltage distribution cabinet depends on various factors, including the size of the installation, the level of load, and specific safety standards.

Industrial Low-Voltage Distribution Cabinet Selection Guide and ...

This article will comprehensively introduce the selection points, technical parameters, installation specifications, and maintenance management of industrial low-voltage distribution cabinets.

Low Voltage Switchgear Design for US and EU Markets: Busbar ...

Low Voltage Switchgear Design: How Better Busbar Systems and Smarter Current Ratings Improve Reliability In low-voltage power distribution, the cabinet is never just a cabinet, and ...

Compact Power Solutions for Display Cabinets: Low-Voltage 12 V / 24 ...

When you open a glass cabinet, you may worry about wires or shocks. Low voltage takes that fear away. 12 V and 24 V are lower than wall outlet power. They really cut the risk of electric ...

Discussion on Electrical Design of Low-Voltage ...

Meta description: Guide to modern low-voltage distribution cabinet design, covering structure, circuit planning, component selection, and installation ...

Discussion on Electrical Design of Low-Voltage Distribution Cabinets

Meta description: Guide to modern low-voltage distribution cabinet design, covering structure, circuit planning, component selection, and installation for enhanced reliability and automation.

how to choose low voltage power distribution cabinet ?

Choosing a low-voltage power distribution cabinet is similar to choosing GIS, but the focus is on load capacity, safety, and adaptability for low-voltage systems (typically $\leq 1,000$ V).

MNS® Low Voltage Distribution Board and Power Cabinet

In designing the distribution board and power cabinet, ABB drew upon its wealth of experience with low-voltage switchgear and placed a strong emphasis on the product's ease of installation, operations, ...

Contact Us

For more information, pricing, or custom solutions, please contact us:

Website: <https://www.mastercarpetsandflooring.co.za>

Email: info@mastercarpetsandflooring.co.za

Phone: +27 82 547 3961

Address: 21 Maxwell Drive, Woodmead, Sandton, 2191, South Africa

This document is for informational purposes only. Specifications subject to change without notice.

