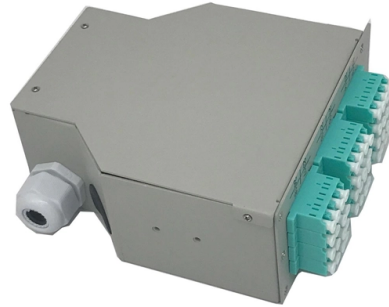


Optical Module Division



Overview

We manufacture individual optical and optoelectronics OEM modules for our customers. Optical Zonu's GPS Fiber Transport links connect your GPS antenna and receiver in situations where coaxial cable is not desirable or practical. Optical modules typically have an electrical interface on the side that connects to the inside of the system and an optical interface on the side that connects to the outside. As a leading global provider of advanced technology solutions for communications and data connectivity, we embrace the need to be nimble. Through lean management. Integrated circuits and reference designs help you create a smaller and faster optical module design used in high-bandwidth data communication applications. Whether you are creating a 100-Gbps or 400-Gbps, small form-factor pluggable (SFP) module, SFP+ transceiver, XFP module, CFP, X2/XENPAK module. SCALE CPO solution is the industry's first OCI MSA capable platform and built with GF's proven silicon photonics technology MALTA, N., May 4, 2026 - GlobalFoundries (Nasdaq: GFS) (GF) today announced the introduction of its SCALE™ optical module solution for co-packaged optics (CPO). GF's SCALE. MALTA, N.



Article Content

Optical and optoelectronics modules | An overview

We manufacture individual optical and optoelectronics OEM modules for our customers. The tasks and solutions are diverse and range from classic lenses and high-performance lighting modules to ...

Optical module - A comprehensive exploration

Optical module is composed of optoelectronic devices, functional circuits and optical interfaces. It undertakes the task of photoelectric signal conversion in the network connection. The ...

GlobalFoundries" Unveils Optical Module Solution Targeting CPO ...

The SCALE CPO solution uses both coarse and dense wavelength-division multiplexing (CWDM and DWDM) for bi-directional data transmission over each optical fiber, delivering significant ...

Optical module

Different optical wavelengths, also referred to as lambdas, of light are multiplexed in some optical modules using wavelength-division multiplexing (WDM). Variants include Coarse WDM (CWDM), ...

Source Photonics: Leading Global Manufacturer of Optical Transceivers

Our technical expertise in R& D runs deep with manufacturing process development expertise and highly specialized engineering teams based around the globe — experts in optoelectronic devices, optical ...

GlobalFoundries accelerates adoption of co-packaged optics for ...

MALTA, N.Y., May 4, 2026 - GlobalFoundries (Nasdaq: GFS) (GF) today announced the introduction of its SCALE™ optical module solution for co-packaged optics (CPO).

The Most Comprehensive Guide Of Optical Modules

Explore the ultimate guide to optical modules. Learn types, functions, performance metrics & how to choose the right module for your fiber network.

Optical module design resources | TI

Design requirements Modern optical module designs often require: Reduced power consumption to control and limit module temperature rise. Dynamic and precise control of laser diodes to regulate ...

Optical Components and Modules

Integrated PD with tap or WDM function provides high performance and reliability in a compact package. The monitoring product family includes advanced modules such as OCM and OTDR, as well as ...

Source Photonics: Leading Global Manufacturer of ...

Our technical expertise in R& D runs deep with manufacturing process development expertise and highly specialized engineering teams based around the globe — ...

Optical module

OverviewOptical modulation and multiplexing typesElectrical Interface TypesIn-module componentsElectrical cable equivalentFront panel optical module MSAsOn-Board Optical module MSAsUsers of Optical Modules

Many different forms of optical modulation and multiplexing have been employed in optical modules. The most common modulation technique historically has been on-off keying or NRZ. Pulse-amplitude modulation (PAM-4) has also been extensively used. In the 2010s, coherent optical modulation has been used. Techniques include Dual Polarization Quadrature Phase Shift Keying (DP-QPSK) and QAM-16.

Contact Us

For more information, pricing, or custom solutions, please contact us:

Website: <https://www.mastercarpetsandflooring.co.za>

Email: info@mastercarpetsandflooring.co.za

Phone: +27 82 547 3961

Address: 21 Maxwell Drive, Woodmead, Sandton, 2191, South Africa

This document is for informational purposes only. Specifications subject to change without notice.

