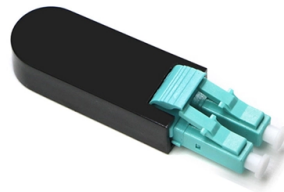


Moldova Standard Secondary Distribution Box



Overview

This non-ducted system includes the rooftop unit, ceiling controls, and wall thermostat, so you can cool down fast. Specs Capacity: 13,500 Btu per hour Airflow: 470 CFM (cubic feet per minute) Max wind coverage: 30' Dimensions and Weight: Air conditioner: 29-1/2" long x 27-5/8" wide. The Secondary Distribution Box (SDB) receives power from Main Power Distribution box via an extender cable and provides a central power distribution to feed normal branch circuits to the electric floor modules through snap-on extender cables. The SDB can be fitted with terminal blocks for custom. secondary unit substation is a close-coupled assembly consisting of enclosed primary high voltage equipment, three-phase power transformers, and enclosed secondary low voltage equipment. REFERENCES This. ACS takes the basic idea of zone wiring and combines it with pre-cut, pre-tested cable and plug-in connectors, to provide power and telecommunication systems that can be installed under raised floors (The Intelligent Floor), or in accessible ceilings (The Intelligent Ceiling). installed under. The power distribution boxes deliver electricity from the main electrical main to other circuits. Main Distribution Board (MDB) 2.

Article Content

The Meaning and Function of Primary, Secondary, and Tertiary ...

This explanation aims to clarify the roles and functions of primary, secondary, and tertiary distribution boxes, enhancing the understanding of these critical components in electrical distribution ...

Distribution Boxes: Types and Functions

Learn what an electrical distribution box (DB/distribution board) is, its main components (MCB/RCCB/RCBO, SPD, busbar) and common types. Includes a quick selection guide for ways, IP ...

Primary and secondary power distribution systems (layouts explained)

Electric power distribution systems are designed to serve their customers with reliable and high-quality power. The most common distribution system consists of simple radial circuits (feeders) ...

Moldova YBF Series Wind Power Box-type Substation

This prefabricated substation is a complete set of substation products reasonably combined with a booster transformer, high-voltage switchgear, low-voltage switchgear, power transformer, and other ...

Secondary Distribution Boxes

Modular zone distribution system for raised floors, improving cable management and installation.

Moldova Power Strips | Moldova PDU Power Distribution Units, ...

Moldova power strips and PDU power distribution units for surface mount, rack mount and general purpose applications. Multiple outlet power strips are manufactured in accordance to Moldova ...

Specifications for Electrical Underground Distribution Systems for ...

This document represents the minimum requirements and specifications for the installation of the electrical underground distribution systems fed from padmounted transformation, serving Secondary ...

moldova construction site electrical distribution box for sale | etrailer

Discover the perfect moldova construction site electrical distribution box for sale for your next adventure, with options hand-picked to match your specifications.

Secondary unit substations design guide

secondary unit substation is a close-coupled assembly consisting of enclosed primary high voltage equipment, three-phase power transformers, and enclosed secondary low voltage equipment.

Secondary Distribution Box

The Secondary Distribution Box (SDB) receives power from Main Power Distribution box via an extender cable and provides a central power distribution to feed normal branch circuits to the electric floor ...

Distribution Boxes Types - The Complete Guide

Most people use them for the ease of controlling multiple power distribution from the main electrical power distribution board. Additionally, the SDB provides power to various locations, such ...

Contact Us

For more information, pricing, or custom solutions, please contact us:

Website: <https://www.mastercarpetsandflooring.co.za>

Email: info@mastercarpetsandflooring.co.za

Phone: +27 82 547 3961

Address: 21 Maxwell Drive, Woodmead, Sandton, 2191, South Africa

This document is for informational purposes only. Specifications subject to change without notice.

