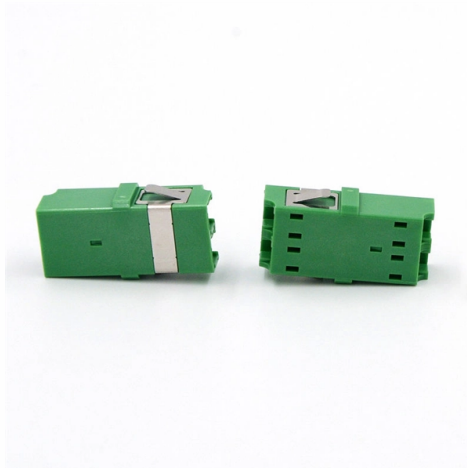


LX 5 Connector Smart Type



Overview

- Latched push-pull connector
- Automatic metal shutter in connector and adapter as dust and laser beam protection
- Small Form Factor connector for high packing density. Made in both die-cast and industry compliant thermoplastics, the MPO adapter is precision manufactured to insure intermateability with industry standard assemblies and connectors. Available with various flange styles, Amphenol MPO. Today, packing density is more important than ever. 5-connector, based on the proven 1.25 mm ferrule technology, is the only standardized small form factor connector combining high packing density, reliability, high performance and safety due to its automatic metal shutter. Doubling capacity is easy with the LX. It offers the advantage of E-2000™ while needing half of the space and is therefore used in applications, where density is very high.



Article Content

FIBRE OPTIC CONNECTOR INTERFACES -

Part 23: Type LX.5 connector family Numéro de référence Reference number CEI/IEC 61754-23:2005

FIBER OPTIC LX.5 CONNECTOR

Color coding system The new color coding system allows fast and secure installation of the connector and the adapter. It ensures mating without risk of confusion. Simplex clips can be used to mark ...

LX.5 Fiber Connector_Shuttered Connector LX5_Patch Cable

Hyoptic LX.5 fiber connector is a high density LX5 patch cables. It offers the advantage of E-2000™ while needing half of the space and is therefore used in applications, where density is very high.

Fiber optic lx.5 connector

Designed to meet the rising demand for faster and more reliable connections, this connector effectively handles various applications in networking and data transfer. Its compact design and versatile ...

LX.5® Connectors & Adapters

The die-cast version was designed to meet the growing need for connectors to assist in preventing excessive EMI leaks from front panels in telecommunication and data communication equipment.

LX.5 adapters | OPTOKON

The LX.5 adapters are designed and manufactured according JIS, IEC, EIA/TIA and ANSI specifications for intermateability and optical performance. The LX.5 adapters are offered in MM or SM ...

Fiber Optic Connectors LX.5 (SFOC 1.25)

The LX.5-connector, based on the proven 1.25 mm ferrule technology, is the only standardized small form factor connector combining high packing density, reliability, high performance and safety due to ...

LX.5 Portfolio Datasheet

LX.5 is a high performance connector which meets the highest standards by excellence in design and manufacturing processes. Only high quality and high precision materials are used to guarantee ...

LX.5 Fiber Optic Patch Cables, LX5 Fiber Cables

LX.5 fiber optic patch cables are generally used in CATV, Ethernet and other telecom networks, sunrise photonics has the single mode and multimode LX.5 fiber patch cords, with UPC or APC ...

LX.5 Patchcord

Available in simplex or duplex configurations, the LX.5 maintains single circuit access and incorporates safety shutters on both the connector and adapter body to provide protection from dust, dirt, and ...

Contact Us

For more information, pricing, or custom solutions, please contact us:

Website: <https://www.mastercarpetsandflooring.co.za>

Email: info@mastercarpetsandflooring.co.za

Phone: +27 82 547 3961

Address: 21 Maxwell Drive, Woodmead, Sandton, 2191, South Africa

This document is for informational purposes only. Specifications subject to change without notice.

