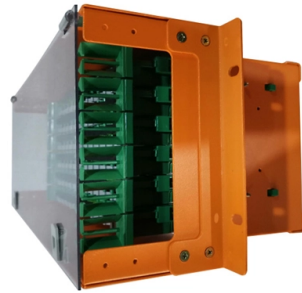


## Installation location of rack-mounted terminal box



### Overview

The ideal location for a business nbn Network Termination Device (BNTD) is a server room or communications room. This guide includes a list of prohibited locations. We've compiled helpful information for the correct handling of WAGO rail-mount terminal blocks. This section will cover all the requirements for physically constructing the room and locating it within the. Rack-Mounted FTBs: Suited for larger installations like data centers, these boxes can be mounted on standard racks, providing scalability and efficient organization of cables. Outdoor FTBs: Built to withstand harsh weather conditions, these boxes are weatherproof and designed for outdoor. Learn how to install a fiber optic termination box step-by-step for FTTH projects. Covers mounting, splicing, routing, labeling, and testing for indoor/outdoor use. Installing a fiber optic termination box is one of those jobs that looks simple on paper, but it's easy to do poorly in the field.

## Article Content

Fiber Termination Boxes: A Beginner's Guide to Installation and ...

Before diving into the installation process, beginners should consider the following:  
Location: Choose an appropriate location for the FTB, ensuring it is easily accessible and aligns with ...

business nbn® Network Termination Device (BNTD) equipment ...

BNTD and PSUs can be installed in a suitable customer supplied communications rack if one is available. Minimum space and clearance requirements must be met by the available rack space.

Where are the terminal blocks usually installed?

Terminal installation location matters—terminal blocks are usually installed in control panels, junction boxes, and distribution boards for safety and easy access.

271116-2021-Racks

Racks shall be placed with a 36-inch (minimum) clearance from the walls on all sides of the rack. When mounted in a row, maintain a minimum of 36 inches from the wall behind and in front of the row of ...

How to install the FTTH fiber access terminal box?

With various sizes and high resistance it allows for flexibility in operation and installation. They can have splitters or patch cords installed inside to perform distribution of single fiber...

Section 271100

Central location of telecommunications rooms reduces the length of cable to each workstation. If there will be more than one telecommunications room per floor, then they shall be equally distributed away ...

Fiber Termination Boxes: A Beginner's Guide to ...

Before diving into the installation process, beginners should consider the following:  
Location: Choose an appropriate location for the FTB, ensuring it is ...

NI TC-4353 Installation Manual And Terminal Block Specifications

The TC-4353 rack-mount terminal block accessories provides thermocouple plug-in terminal connectivity. This guide describes how to install and configure the NI PXIe-4353 module and TC ...

CHAPTER 15

Reference should be made to floor plans or equipment layout drawings to determine the installation location of the rack. The installation should proceed as follows:

## Tips and Responsibilities for Using Rail-Mount Terminal Blocks | WAGO

Extremely compact dimensions, like the short installation length, provide maximum space for conductor termination. Featuring a large cross-section range from 0.25 to 6 mm<sup>2</sup> (22-4 AWG), these terminal ...

## How to Install a Fiber Optic Termination Box (FTTH Steps)

Learn how to install a fiber optic termination box step-by-step for FTTH projects. Covers mounting, splicing, routing, labeling, and testing for indoor/outdoor use.

## Cisco Catalyst 9300 Series Switches Hardware Installation Guide

You can use the minimum recommended number of two screws for installing the rack-mount bracket to each side of the switch. If required, while mounting, you can use the additional four ...

## The Comprehensive Guide to Fiber Termination Boxes (FTB): Design ...

- Rack-Mounted FTBs: Designed to fit into standard 19-inch network equipment racks, these units are prevalent in data centers, central offices, and large telecom rooms.

## Contact Us

For more information, pricing, or custom solutions, please contact us:

Website: <https://www.mastercarpetsandflooring.co.za>

Email: [info@mastercarpetsandflooring.co.za](mailto:info@mastercarpetsandflooring.co.za)

Phone: +27 82 547 3961

Address: 21 Maxwell Drive, Woodmead, Sandton, 2191, South Africa

This document is for informational purposes only. Specifications subject to change without notice.

