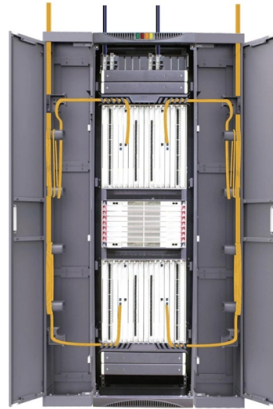


## How many watts is the secondary distribution box



### Overview

Closer to the customer, a distribution transformer steps the primary distribution power down to a low-voltage secondary circuit, usually 120/240 V in the US for residential customers. The power comes to the customer via a service drop and an electricity meter. Overview Electric power distribution is the final stage in the. Electricity is carried from the to individual consumers. Distribution connect to the transmission system an. Electric power distribution become necessary only in the 1880s, when electricity started being generated at. Until then, electricity was usually generated where it was used. The first power-distribi. Electric power begins at a generating station, where the potential difference can be as high as 33,000 volts. AC is usually used. Users of large amounts of DC power such as some. Primary distribution voltages range from 4 kV to 35 kV phase-to-phase (2.4 kV to 20 kV phase-to-neutral) Only large consumers are fed directly from distribution voltages; most utility customers are connected to a transformer.

## Article Content

### How to Size a Subpanel for Your Electrical Load

Sizing an electrical subpanel correctly is a foundational step in safely expanding a home or shop's electrical capacity. A subpanel, often called a satellite panel, is a secondary distribution point that ...

### Electric Service and Meter Installations Manual

The information contained in this booklet refers primarily to service requirements at the usual secondary distribution voltages for light and power installations.

### Secondary Distribution Boxes

Modular zone distribution system for raised floors, improving cable management and installation.

### Secondary Pedestals | Hubbell Power Systems

Discover the robust selection of secondary pedestals at Hubbell, designed to enhance and secure your power distribution needs. These secondary pedestals are built to withstand harsh environments, ...

### Distribution Boards

Easy Installation of outgoing devices The design of the pan assembly facilitates the installation of outgoing devices. Availability of mixing Mixing two different types of outgoing devices can be provided in ...

### Electric power distribution

Closer to the customer, a distribution transformer steps the primary distribution power down to a low-voltage secondary circuit, usually 120/240 V in the US for residential customers. The power comes to ...

### What Size Sub Panel For Shed? (+Estimated Cost)

Generally, the appliances you want to use in the shed should be up to 3,600 watts. As the sub-panel feeds power directly from the main breaker, you should stay within this rate.

### Power Distribution Systems

Secondary Unit Substation Transformers transform a Medium Voltage to a Low Voltage Level, generally under 1000 Vac. They are available in Fluid-Filled and Dry-Type styles.

### Standard

The distribution facilities of the customer beyond the point of delivery shall be connected to the Company's distribution system at one central point through protective devices, approved by the ...

#### TECHNICAL SPECIFICATION FOR LT DISTRIBUTION BOX

General Technical Particulars for LT Distribution Boxes : - The L.T. Distribution Boxes should be of the dimensions as per the drawing & details in the table furnished.

## Contact Us

For more information, pricing, or custom solutions, please contact us:

Website: <https://www.mastercarpetsandflooring.co.za>

Email: [info@mastercarpetsandflooring.co.za](mailto:info@mastercarpetsandflooring.co.za)

Phone: +27 82 547 3961

Address: 21 Maxwell Drive, Woodmead, Sandton, 2191, South Africa

This document is for informational purposes only. Specifications subject to change without notice.

