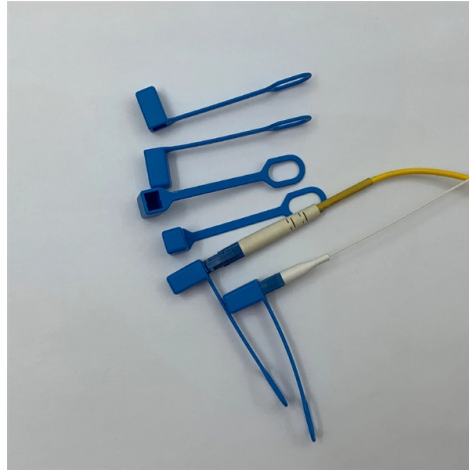


How long should the wiring for the distribution box be



Overview

According to the National Electrical Code (NEC), the conductor must be long enough to extend outside the box's opening. The question is, how long should it be?

It takes the incoming power and safely distributes it to different circuits throughout your building. Whether in a home or an industrial facility, this box keeps your electrical setup organized, functional, and efficient. Wiring Direction: Wiring between the main circuit breaker and each branch circuit breaker in the box generally goes on the left, and the wiring out of the distribution box generally goes on the right. Single Phase Distribution Box generally consists of Double Pole MCBs, Single Pole MCBs, and RCCBs. Adjustments are made for the ground wire as you will see in the. The National Electrical Code (NEC) provides comprehensive safety standards for electrical installations, including requirements for electrical panels (main service panels and subpanels or breaker box). NEC Article 408 covers switchboards, switchgear, and Panelboards installation and applications.



Article Content

Design requirements and standards for low voltage distribution boxes

It makes sure that electrical equipment, including low voltage distribution boxes, is safe for users and meets market rules. The LVD covers equipment with voltages between 50 and 1000 volts ...

How Much Wire Should Be Left in an Electrical Box? A Guide

The NEC outlines clear rules for how much wire should be left in an electrical box. For any outlet, junction box, or switch point where a connection or splice will be made, there must be at ...

Distribution Box Wiring Steps

Wiring Direction: Wiring between the main circuit breaker and each branch circuit breaker in the box generally goes on the left, and the wiring out of the distribution box generally goes on the ...

Single Phase Distribution Box (DB) Wiring Diagram and Connection

Hey, in this article we are going to see the Single Phase Distribution Box Wiring Diagram and Connection Procedure. A distribution board or distribution box is where the main power supply is ...

Distribution Board Installation Guide | PDF | Electrical Wiring | Fuse ...

This document provides guidance on installing distribution boards. It discusses selecting a wiring system, protecting cables, safety precautions, technical specifications, wiring diagrams and ...

Electrical Codes for Junction Boxes

The volume of electrical boxes shall be sufficient for the number of conductors, devices, and cable clamps contained within the box. Code Adoption Information: The codes shown are examples only ...

NEC Requirements for Panelboards and Load Centers

Wireway Depth: The maximum permitted distance for the through (wireway) beyond the front of panelboard is 6 inches, the trough's depth is 12 inches and switchboard's depth is 24 inches.

Understanding Circuit Breaker Wiring Configurations in ...

Master the safest and most efficient circuit breaker wiring configurations. Learn about single-phase vs. three-phase setups, safety standards, and future-proof electrical ...

National Electric Codes for Wire in Electrical Boxes NEC-Table370-16a

The National Electrical Code explains the Maximum Number of Wires that can be installed into a box, otherwise known as Box Fill. This code is based upon the type of box, wires, wire sizes, wire clamps ...

The installation requirements for the distribution box

Learn how to install a distribution box safely and correctly. Covers wiring, placement, standards, and expert tips for a compliant setup.

Understanding Circuit Breaker Wiring Configurations in Distribution Boxes

Master the safest and most efficient circuit breaker wiring configurations. Learn about single-phase vs. three-phase setups, safety standards, and future-proof electrical planning.

Design requirements and standards for low voltage ...

It makes sure that electrical equipment, including low voltage distribution boxes, is safe for users and meets market rules. The LVD covers ...

Contact Us

For more information, pricing, or custom solutions, please contact us:

Website: <https://www.mastercarpetsandflooring.co.za>

Email: info@mastercarpetsandflooring.co.za

Phone: +27 82 547 3961

Address: 21 Maxwell Drive, Woodmead, Sandton, 2191, South Africa

This document is for informational purposes only. Specifications subject to change without notice.

