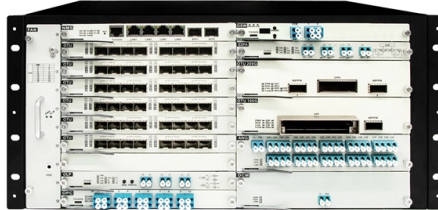


Does a PoE switch affect network speed



Overview

One of the common concerns is whether PoE (Power over Ethernet) switches impact network speed. In fact, compared to Wi-Fi, they offer a more stable and often speedier connection. They use dedicated pairs of wires to separately transmit. Power over Ethernet (PoE) switches combine data and power delivery into a single Ethernet cable, simplifying deployment of devices such as access points, IP cameras, VoIP phones, and IoT equipment. PoE does not reduce network speed, does not waste excessive power when proper cabling standards are. IEEE-compliant PoE power supply itself does not slow network speeds! The physical layer frequency bands isolate data and power, preventing interference. Actually, the Internet speed is drastically affected by your ISP, the Internet backbone, the remote website server, traffic on your local node, and more. Do PoE Switches Only Support Speed Below 1G?

If it were a few.



Article Content

Will PoE slow down gigabit internet? : r/HomeNetworking

Because only 4 pins are used for signal, it will connect at 100 Mbps speed at most. Keep in mind, this may not be a big deal - many security cameras and PoE devices only run at 100 Mbps anyhow.

6 Things You Should Know About PoE Switch

For data and power, it uses different wires, so it will not affect the speed. In a Gigabit Ethernet connection, 4 pairs of wires are used for data and power transmission at the same time, ...

PoE Switches Explained: Speed, Power, Compatibility Guide (2026)

PoE does not reduce network speed, does not waste excessive power when proper cabling standards are followed, and the latest IEEE 802.3bt PoE++ standard remains fully backward ...

Will PoE over Cat6 cable slow down network speed?

In principle, loading the power supply on the network cable does not affect the transmission of Ethernet signals.

Everything YouNeed to Know About PoE Switches: A Comprehensive ...

Do PoE Switches Affect Network Speed? One of the common concerns is whether PoE (Power over Ethernet) switches impact network speed. The answer is emphatically no. PoE switches ...

PoE Power: Slow Your Network? Debunking 3 Big Myths!

PoE technology is popular in networks because it offers "one-wire, two-pronged" convenience. However, many users worry: Does using PoE slow down the network? This article will ...

Understanding PoE Switches: Speed, Power Consumption, and ...

Do PoE Switches Affect Speed? In most businesses and homes today, fast Internet speeds are a prerequisite for productivity and profitability. Therefore, everyone is concerned about ...

Understanding PoE Switches: Speed, Power ...

Do PoE Switches Affect Speed? In most businesses and homes today, fast Internet speeds are a prerequisite for productivity and profitability. ...

Does Power over Ethernet reduce speed?

To put it simply, PoE does not reduce the speed of your network. The data transmission speed remains the same, whether you're using PoE or not. This is because PoE uses the same ...

The Impact of PoE on Network Cabling Requirements

Understanding PoE technology can help engineers build networks that meet PoE cabling requirements while maintaining reliable network performance. The technology allows administrators ...

Power over Ethernet (PoE, PoE+, UPOE, UPOE+)

Figure 1. An Ethernet switch providing power to end clients There are two specifications for standard PoE implementations, IEEE 802.3af (2003) and IEEE 802.3at (2009), which accommodate different ...

Contact Us

For more information, pricing, or custom solutions, please contact us:

Website: <https://www.mastercarpetsandflooring.co.za>

Email: info@mastercarpetsandflooring.co.za

Phone: +27 82 547 3961

Address: 21 Maxwell Drive, Woodmead, Sandton, 2191, South Africa

This document is for informational purposes only. Specifications subject to change without notice.

