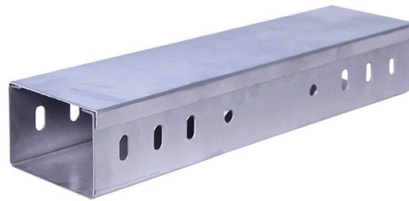


Cable tray facing downwards at a right angle



Overview

Once errors are identified, the following steps can resolve them: Relevel Trays: Use leveling tools to correct misalignments. Reinforce Fastenings: Secure trays with appropriate brackets and hardware. Hubbell's NEXTFRAME® Ladder Tray is the effective and widely used cable runway that supports and delivers bundles of cable between cabinets, racks, and closets, along walls, and suspended from ceilings. The Ladder Tray features light, rugged, tubular steel construction. It is designed for. All rights, including translation into other languages, reserved under the Universal Copyright Convention, the Berne Convention for the Protection of Literary and Artistic Works, and the International and Pan American copyright conventions. These errors often stem from improper measurements, environmental factors, or lack of adherence to standards. Whether installed as stainless steel cable trays, these components offer durable and flexible solutions for routing cables safely. Cable tray systems design shall comply with NEC Article 392, NEMA VE 1, and NEMA FG 1 and follow safe work practices as described in NFPA 70E.



Article Content

Cable Tray Ladder Trunking Wire Basket Installation ...

If a strut is used for this purpose, mount the strut directly to the floor or roof and attach the cable tray to the strut using hold-down clamps and/or guide clamps.

CABLE TRAY SYSTEMS GUIDE

The Ladder Tray features light, rugged, tubular steel construction. It is designed for mechanical support and strain relief in long runs of cable and creates a smooth gradual bend for cable. Rail and stringer ...

Trunking Cutting Techniques Guide | PDF | Metalworking | Tools

The document provides instructions for forming various bends and joints in electrical trunking and cable trays. It describes: 1) How to mark and cut a right-angle internal bend in a section of trunking, ...

Cable Tray Installation Specifications | PDF | Sheet ...

This document provides installation guidelines for cable trays, including: 1) Cable trays come in perforated and ladder types, with perforated trays made of steel ...

Solved: Cable Tray Orientation

Does anyone know how to place cable tray on a wall so that the open end of the tray is facing into the room? I have tried inserting a fitting first, rotating that so it is facing the right way and ...

Best Practice Guide to Cable Ladder and Cable Tray Systems

Any vertically orientated component, whether cable ladder, cable tray or support, acts structurally as a column; it is not usual to consider cable ladder or cable tray in this way because they are not ...

CABLE TRAY INSTITUTE

Answer: There is no NEC or other limitation on cable trays that would prevent the "Edge-Wise" orientation. The CTI needs to develop guidelines for this installation. This type of installation ...

Trunking Cutting Techniques Guide | PDF

The document provides instructions for forming various bends and joints in electrical trunking and cable trays. It describes: 1) How to mark and cut a right-angle ...

Document DICOS

Step-down splice plates should be designed and placed so as to maximize the rigidity of the cable tray, unless step-down splice plates are part of a system specifically designed for other placement, ...

CABLE TRAY

Do not allow the cables to drop in the cable tray as this may damage the cable and/or the cable tray. If cable connections will not be made immediately, the pulling eye or basket grip should be removed ...

Common Issues in Steel Cable Tray Installations

For engineers, contractors and facility managers, understanding common problems in steel cable tray installations - and knowing how to avoid ...

Cable Tray Installation Errors And Solutions

Learn how to identify, resolve, and prevent cable tray installation errors. This guide provides actionable tips and insights to ensure efficient electrical system setups.

Cable Tray Technical Guide A practical guide to product selection ...

Cable tray installed in a hazardous location must contain only those cables that are appropriate for this type of environment as defined in Chapter 5 of the NEC.

Installation Guide Wire Basket Cable Trays

Always use side-action bolt cutters. Angle all cuts away from the new end. Cut each wire with one clean cut whenever possible. Remove any sharp edges to eliminate possible damage to cables.

Common Issues in Steel Cable Tray Installations & Troubleshooting

For engineers, contractors and facility managers, understanding common problems in steel cable tray installations - and knowing how to avoid them - is essential for ensuring system ...

Contact Us

For more information, pricing, or custom solutions, please contact us:

Website: <https://www.mastercarpetsandflooring.co.za>

Email: info@mastercarpetsandflooring.co.za

Phone: +27 82 547 3961

Address: 21 Maxwell Drive, Woodmead, Sandton, 2191, South Africa

This document is for informational purposes only. Specifications subject to change without notice.

