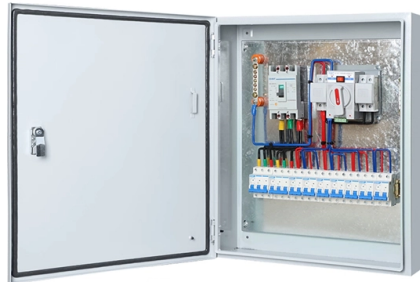


Are optoelectronic conversion modules plug-and-play



Overview

An optical module integrates optoelectronic chips and electronic chips into a deployable system, enabling plug-and-play conversion between electrical and optical signals (E/O and O/E). The core “engine” responsible for generating and receiving optical signals. These standardized devices convert electrical signals from network equipment (switches, routers, servers) into optical. The optical module serves as a crucial component in optical fiber communication systems, operating at the physical layer, which is the lowest layer in the OSI model. An. The O2E is a high bandwidth, broadband optical to electrical converter available in a range of configurations. An AOC resembles a standard cable assembly (e. These modules typically consist of a transmitter, which converts electrical signals into a light signal, and a receiver, which converts the received signal back. Kyocera Corporation (President: Hideo Tanimoto, hereinafter "Kyocera") is pleased to announce the development of a pluggable optoelectronic module (OSFP-XD*1) supporting the PCIe®*2 6.

Article Content

Everything You Need to Know About Optical Modules

These modules convert electrical signals into optical signals, which can travel long distances without degradation. Optical modules are essential components of fiber optic networks ...

Active Optical Cables (AOC) | Romtronic

The result is plug-and-play optical connectivity: each end has optoelectronics that transform electrical signals into light, the light travels over the fiber, and another converter turns it ...

The Most Comprehensive Guide Of Optical Modules

Explore the ultimate guide to optical modules. Learn types, functions, performance metrics & how to choose the right module for your fiber network.

Kyocera Develops Pluggable Optoelectronic Module Supporting ...

Kyocera has been developing onboard-type optoelectronic modules that support PCIe® 5.0 and convert electrical signals from CPUs, GPUs, and other components into optical signals.

OPTICAL TO ELECTRICAL CONVERTER

The MatriQ series provides the same high-performance test capabilities of our PXle modules in an compact benchtop design. MatriQ instruments are simple to setup and easy to operate, making ...

What is an LPO Optical Module?-fiberwdm

Pluggable characteristics: Similar to USB devices, it supports flexible plug-and-play, greatly improving the convenience of equipment installation, maintenance, and upgrades, while ...

Optical modules and optoelectronic chips | Weyland

An optical module integrates optoelectronic chips and electronic chips into a deployable system, enabling plug-and-play conversion between electrical and optical signals (E/O and O/E).

Transceivers Explained: SFP vs SFP+ vs SFP28 vs QSFP+ vs QSFP28

In this guide, we break down the differences between these modules and help you make the best decision for your infrastructure—whether you're upgrading a legacy system, increasing the ...

Complete Guide to Pluggable Optical Transceivers - MapYourTech

What are Pluggable Optical Transceivers? Pluggable optical transceivers are compact, hot-swappable network interface modules that serve as the critical bridge between electronic and ...

Optical Module Package Types Overview

There are many types of optical modules, and there are several standard ways to categorize them, such as according to different package forms, different application areas, ...

Contact Us

For more information, pricing, or custom solutions, please contact us:

Website: <https://www.mastercarpetsandflooring.co.za>

Email: info@mastercarpetsandflooring.co.za

Phone: +27 82 547 3961

Address: 21 Maxwell Drive, Woodmead, Sandton, 2191, South Africa

This document is for informational purposes only. Specifications subject to change without notice.

